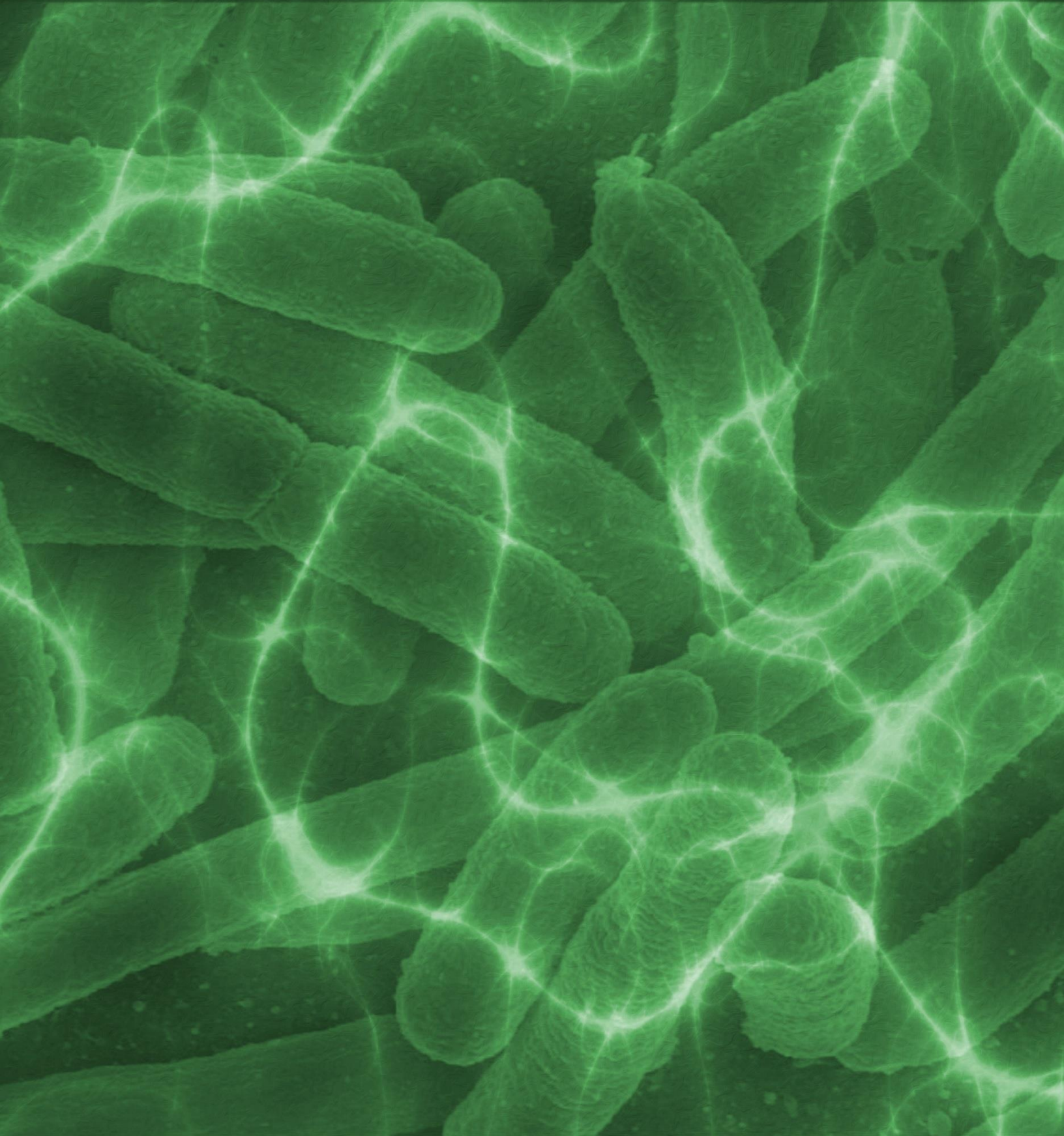


Scalar Energy for the World

Vol 4: Pathogens and the Pathogenic Cleanse



SCALAR ENERGY FOR THE WORLD

Vol 4: Pathogens and the Pathogenic Cleanse

Preface

You might be asking yourself, “What exactly is a pathogen?” Well, all you need to know is this: in the broadest sense, a pathogen is anything that can produce disease.

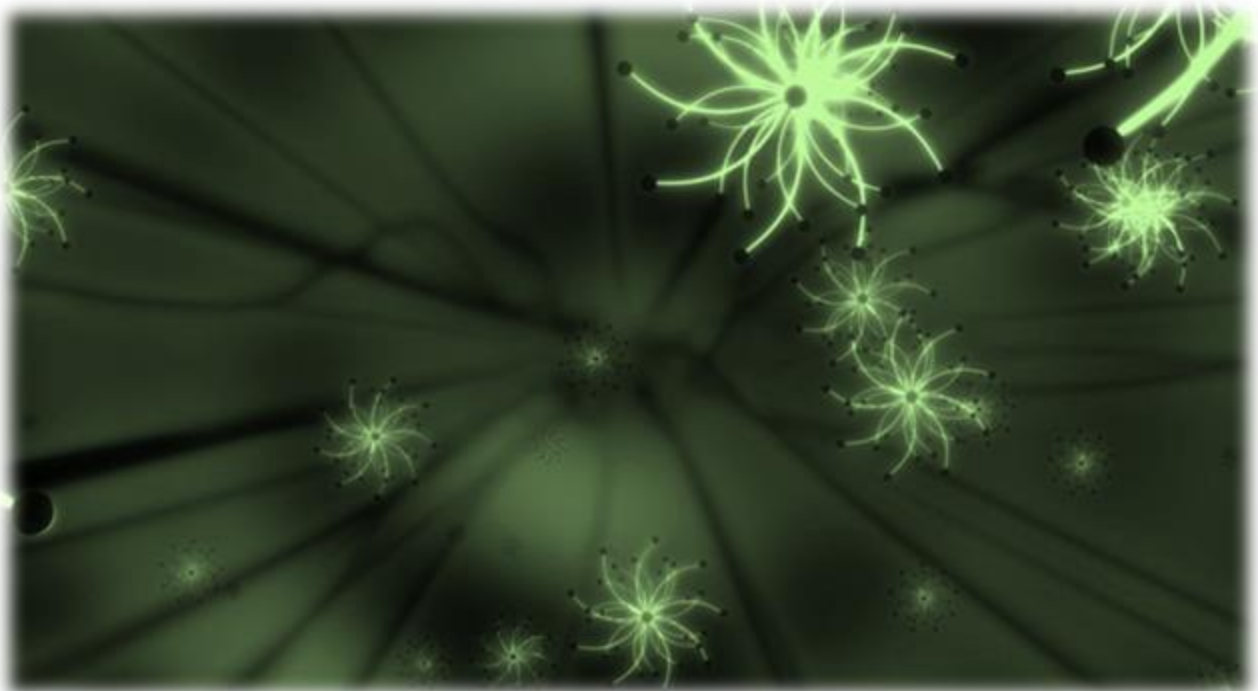
Pathogens vary as to their degree of morbidity and mortality as these infectious agents are responsible for thousands of diseases and medical conditions.

Today, while many medical advances have been made to safeguard against infection by pathogens through the use of vaccination, antibiotics, and fungicide, pathogens continue to threaten human life.

Something has to be done to stop this.

Pathogens such as, bacteria, viruses, fungi/mold, protozoan and prions all contribute to disease and in some cases result in death. Each type of pathogen has its own treatment, but why should they? If they are similar enough to all be classified as pathogens, why isn't there one treatment for all of them?

Science says there is... and Scalar Energy may be that very answer.



The Pathogenic Cleanse

What does the pathogen cleanse do for us? What are the components of an effective scalar energy pathogen cleanse? How often does one need to receive a pathogen cleanse?

The standardized scalar energy treatments are delivered seven (7) days a week thereby assuring daily healing by way of scalar energy.

Scalar Energy Protocols

1. The Pathogenic Cleanse
2. The Nutrient Therapy
3. The Chakra Balance

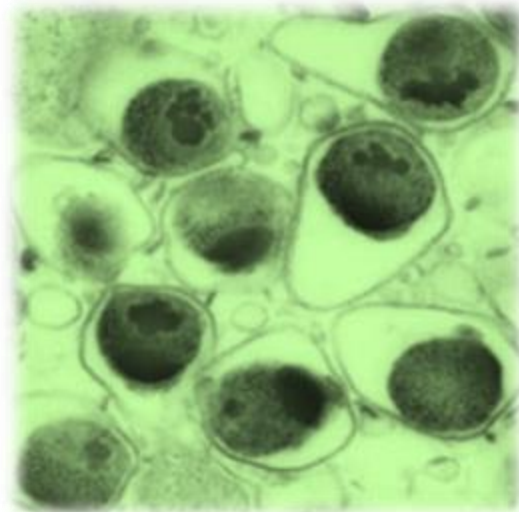
The scalar energy pathogenic cleanse serves to disassemble over 400,000 species of pathogens such as, bacteria, viruses, fungi/mold, protozoan and prions. Scalar energy is able to transmute pathogens and change the molecular and atomic structure of any infectious agent. Once the molecular and atomic structure of a pathogen has been transmuted, that infectious agent ceases to exist as it has been reduced to elements, such as carbon, oxygen, nitrogen, calcium, phosphorus, hydrogen, sodium, iron, etc.

How it Works

Let's take a look at an example.

For instance, I place a magnified photograph of the bacterium, *Chlamydomonas pneumoniae* inside the scalar energy instrument thereby allowing the scalar energy harmonic or signal of the bacterium to be interpreted by way of the photograph.

As a result, the scalar energy pathogenic cleanse disassembles and eradicates the bacterium, *Chlamydomonas pneumoniae*, the causative agent of pneumonia. This 'cleanse' transmutes the *Chlamydomonas pneumoniae* into harmless



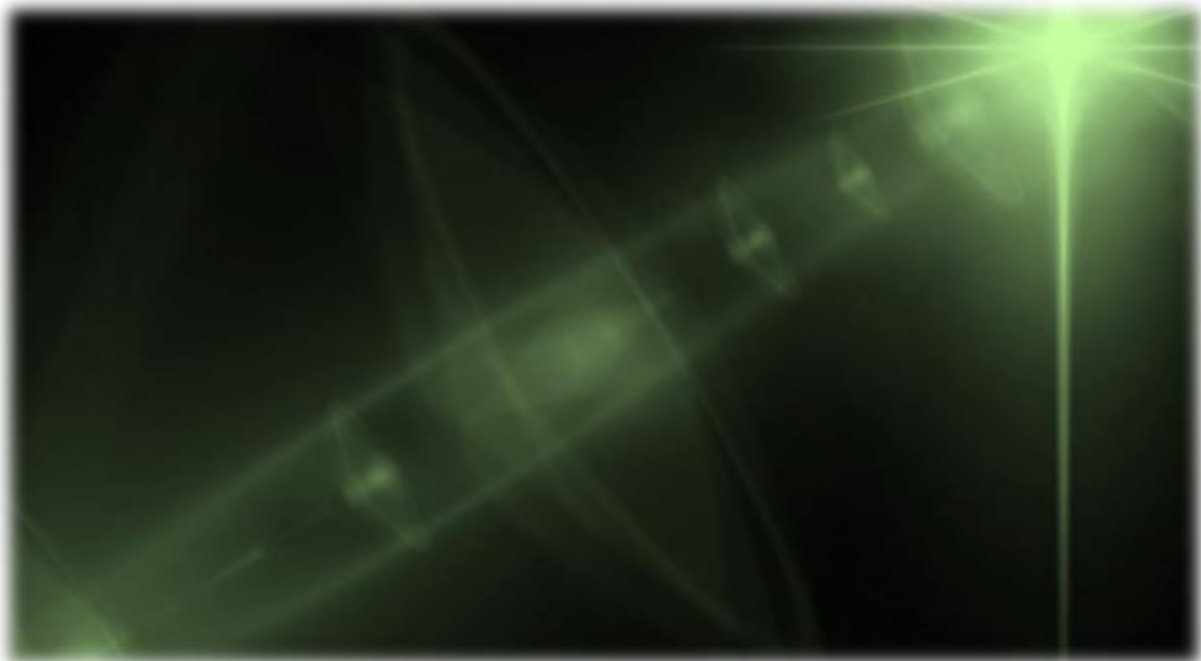
elements, eradicating the infectious agent in the process.

Upon interpreting the scalar energy harmonic of *Chlamydomypha pneumonia*, the scalar energy reverse-phase angle harmonic of the bacterium is then broadcast into the person infected with the pathogen. Accordingly, the scalar energy reverse-phase angle harmonic of any pathogen will serve to disassemble and eradicate that particular infectious agent.

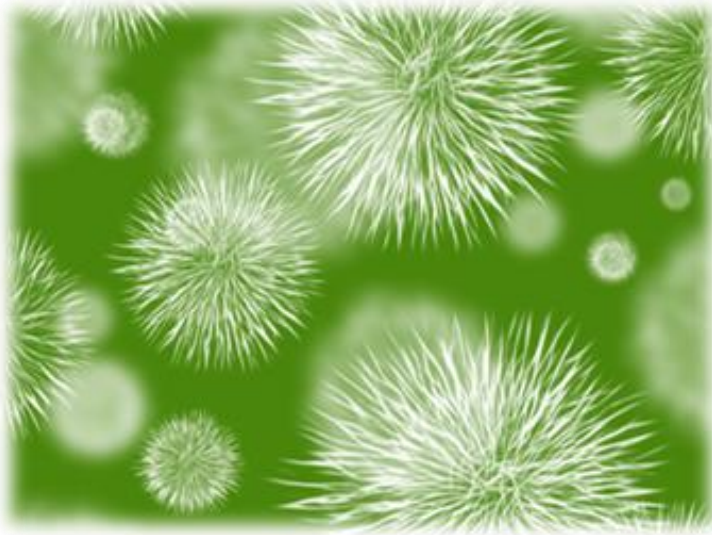
In this example, the magnified photograph of *Chlamydomypha pneumoniae* serves as the instructions for the scalar energy instrument to interpret and then broadcast the reverse-phase angle harmonic necessary to disassemble or transmute the bacterium.

When treating a patient, I utilize an actual photograph of the person in order to administer the scalar energy pathogenic cleanse. A photograph of a person can serve as the connection between my scalar energy instrument and the person receiving the scalar energy pathogenic cleanse. This is because the photograph possesses a unique scalar energy signature that is exclusive to each person.

Just like in the *Chlamydomypha* example, when working on a patient I place a photograph of the person inside my scalar energy instrument, which allows for a direct connection between the scalar energy instrument and that person. Once that connection has been established, I am able to broadcast the scalar energy reverse-phase angle harmonic of any pathogen to him or her. In doing so, the reverse-phase angle harmonic of a pathogen will serve as the informational input necessary to disassemble and eradicate any infectious agents that may be present.



A Truly Fundamental Force



The scalar energy pathogenic cleanse utilizes thousands of magnified photographs of pathogens in order to interpret and subsequently disassemble various species of bacteria, viruses, fungi, protozoan, and prions that infect the human body in every scalar energy session. As a fundamental force in nature, scalar energy is capable of disassembling any pathogen.

All physical matter, including pathogens, can be disassembled or transmuted by

scalar energy and subsequently reduced to their constituent building block components: the elements.

I treat people with scalar energy that have chronic illness exacerbated by pathogenic infection as well as people in sound health. Everyone is a candidate for a scalar energy pathogenic cleanse as everyone is infected with pathogens. In some cases, the eradication of pathogens will serve to prevent a disease from eventually developing in the future. The scalar energy pathogenic cleanse is a consummate and dependable process in which the molecular bonds of a pathogen are always negated thereby causing the infectious agent to cease to exist. Pathogens are everywhere and infection from these infectious agents is certain. Hence, the scalar energy pathogenic cleanse is the simple, painless and effective answer to pathogenic disease.

We travel to the grocery store, school, and work. We travel in airplanes, buses, and trains. We attend events—large and small—where people congregate from many regions of the country and even the world. No matter where we go, there are pathogens.

You may choose to use the pathogen cleanse to overcome a chronic illness such as parasitic infestation, herpes, hepatitis C, MRSA, candida, or Lyme disease over a short period of time and you can choose to use the pathogen cleanse indefinitely as a preventive measure. The choice is yours; make the right one.

About the Author

Tom Paladino is a scalar energy researcher and has 25 plus years' experience helping people with chronic pathogenic illness.

Tom Paladino's research and work with the scalar energy began during his undergraduate years. He was inspired by various scientists, i.e., Hieronymus, Moray, Priore' and especially Nikola Tesla, as to the existence of an energy that is not of the electromagnetic spectrum. With this inspiration, he pursued a course of independent study in order to better understand and subsequently harness scalar energy.

Scalar energy is also known as prana, chi, radiant energy, zero point energy, qi, orgone, eloptic. After years of experimentation and modification, Tom Paladino has developed a technique using scalar energy that will transmute pathogens quickly and painlessly. This technique facilitates the use of photographs of people who desire to have pathogens transmuted in their bodies.



Tom Paladino developed a treatment process whereby he is able to administer the scalar energy reverse-phase angle harmonic of a pathogen, thereby causing that agent of infection to disassemble or fall apart. Scalar energy operates at the quantum level and is capable of disassembling all types of pathogens thus eliminating the causative agent of disease. Once the causative agent of a pathogenic disease has been eliminated the symptoms associated with that infection decrease or disappear altogether.

Learn more at: <http://tompaladinoscalarenergy.com/>